

Employee Services Center

Commission Meeting
October 13, 2020

Project Scope

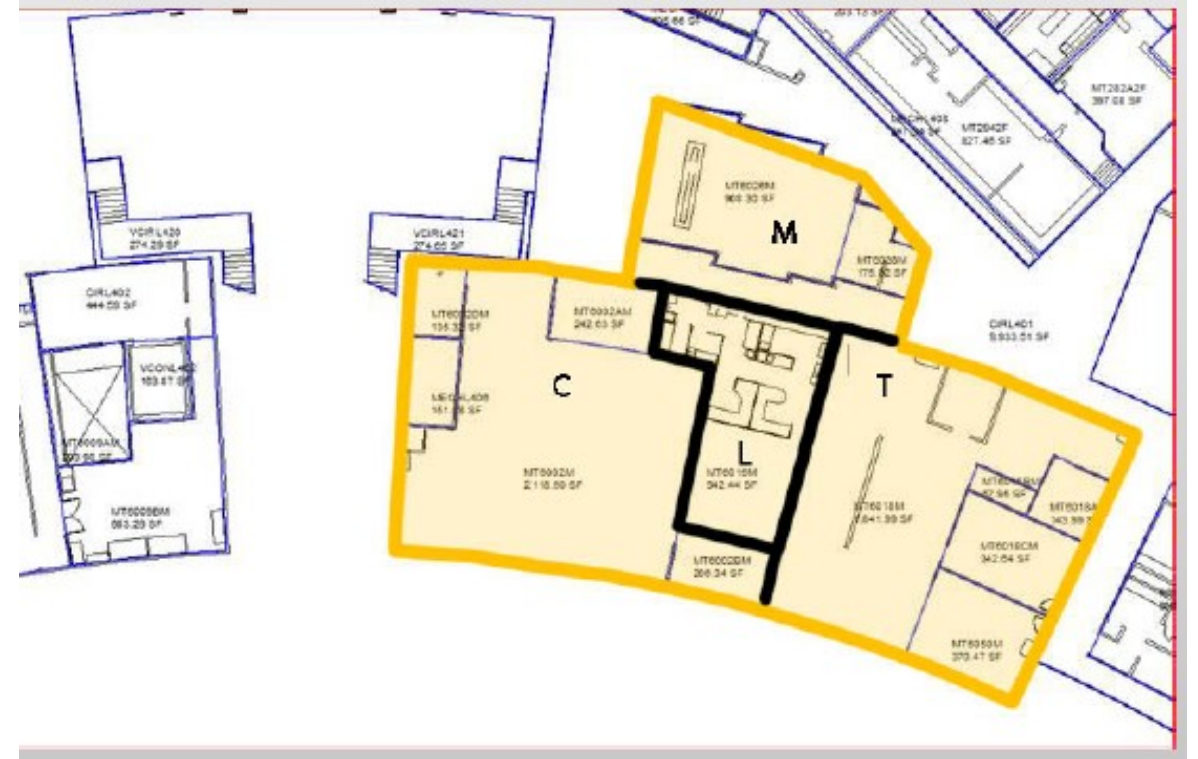
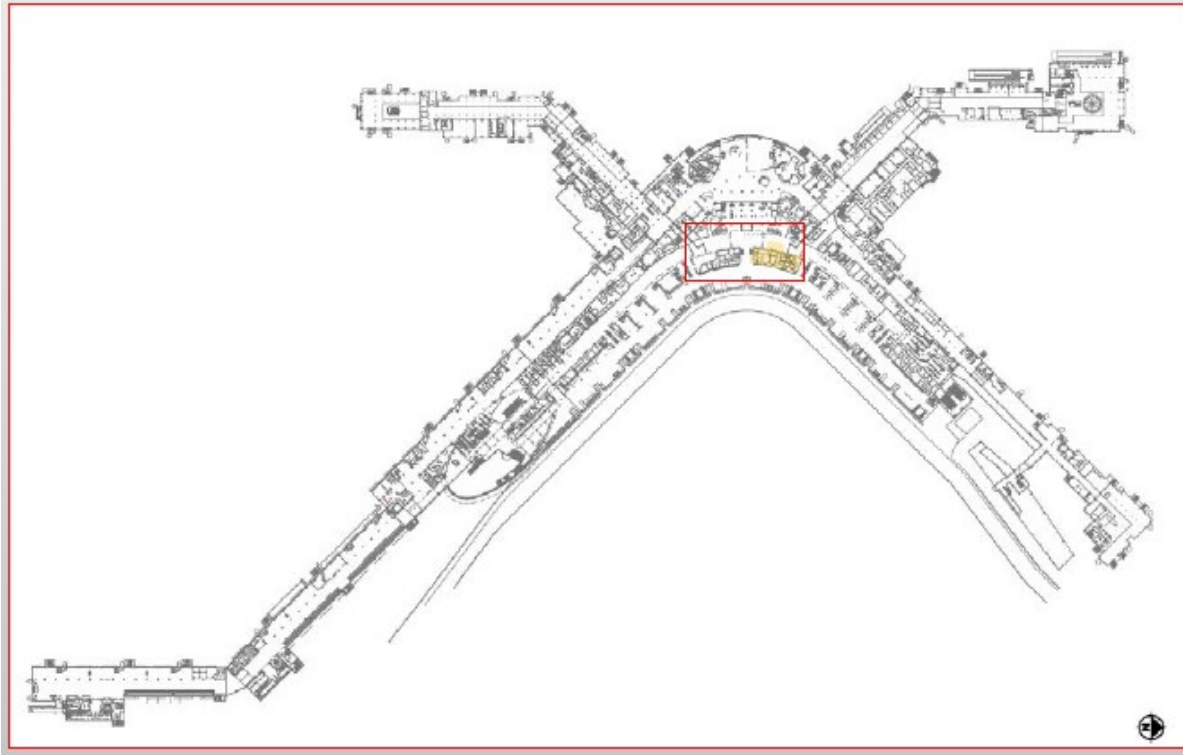
This project will build a new Employee Services Center, creating a “one-stop shop” for the badging and on-boarding of airport employees which will include:

- Credentialing (Badging)
- Training
- Employee Parking
- Key (Access) Pick-Up
- New Company On-Boarding

The consolidation of these functions to one office will streamline employee on-boarding



Employee Services Center Location



What is currently the Credential Center (C), Lost & Found (L), Training Office (T) and Meditation Room (M) are located on the Mezzanine Level above Checkpoint 3.

The space outlined in yellow is the new footprint of the consolidated Employee Services Center.

Enabling Projects

Meditation Room Relocation

The Meditation Room is being relocated post-security near concourse A.

It is expected to open November 2020.

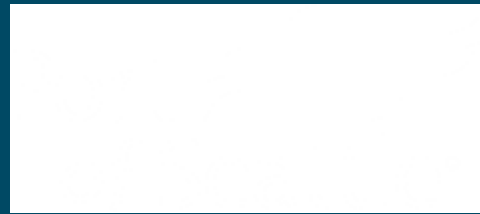


Lost & Found Relocation

The Lost & Found office is being relocated to the baggage claim level.

It is expected to open January 2021.

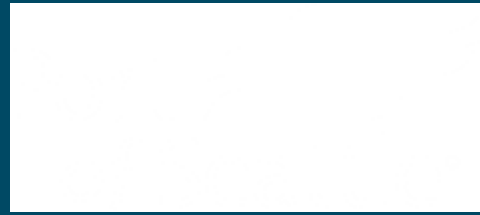




BUDGET & SCHEDULE

Budget, Schedule and Risks

- This project remains within its budget of \$10,400,000
 - Lost and Found Enabling Project - \$3,100,000
 - Employee Services Center Project - \$7,300,000
- Construction is scheduled to complete Q2 2022
- This project's location in the Airport Main Terminal Building has the risk of legacy systems that traverse it requiring careful demolition and abatement to avoid damaging them



FACILITY DETAILS

Enclosed Waiting Room



Streamlined Customer Processing



Using LEAN Principles to Improve Flow

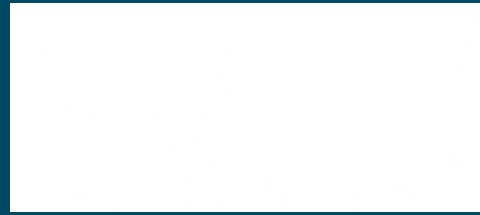


COVID Safety & Social Distancing

Design changes were incorporated to address COVID concerns, including:

- Changing furniture layouts to ensure appropriate separation for staff and customers.
- Incorporating glass separation for service windows
- Designing furniture with an increased vertical barrier between work stations.
- Ensuring proper airflow throughout the facility and waiting areas.





WELL CERTIFICATION

WELL Certification

- First project to pursue WELL certification at the Airport.
- WELL is a performance-based system for measuring, certifying, and monitoring features of the built environment that affect human health and well-being.



WELL Certification Key Components



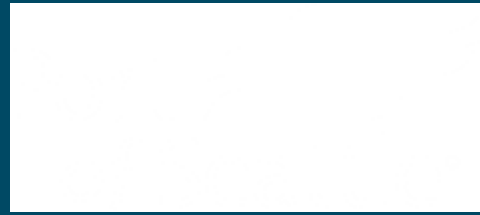
Circadian lighting



Indoor air quality monitoring and live display screen



Acoustic Performance
(Acoustic zone map shown above)



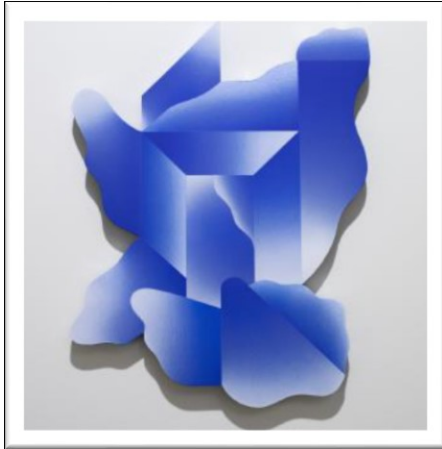
PUBLIC ART

Investment in Public Art

- Project took advantage of the recently updated policy directive of restoring the funding to the public art program (1%).
- This project came at a time when the Port had an opportunity to make an important contribution to the local art community that was effected by the pandemic.
- This project purchased art from 10 local artists to rotate through the Employee Services Center as well as the various art displays throughout the airport.
- The acquisitions also dramatically increased the representation of women and minority artists in the Port's art collection.



Investment in Public Art



Andy Arkley



Dennis Allen



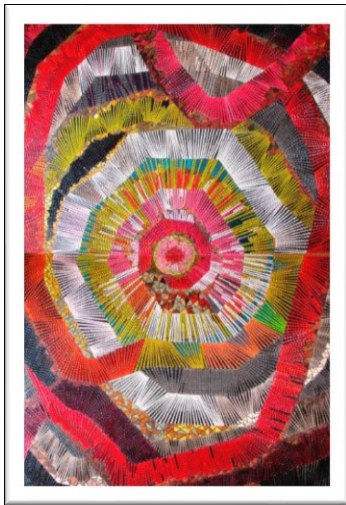
Jason Hunt



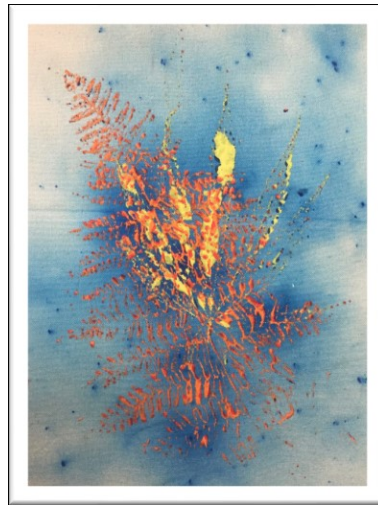
David Hytone



Gretchen Frances Bennett



Naoko Morisawa



Giles Lyon



Jennifer Zwick



Monica Quarto



Soo Hong

THANK YOU

